

# Butterfly

Designed by Lisa DeBee Schiller

Featuring Lisa DeBee Schiller's *Coryn Collection*

SIZE: 32" x 41"



**PLEASE NOTE:** QUILT IMAGE SHOWN IS A DIGITAL REPRESENTATION, FABRIC LOOK MAY VARY ON YOUR PROJECT.  
VISIT OUR *FREE PROJECT* SECTION ONLINE FOR ANY PATTERN UPDATES BEFORE STARTING QUILT PROJECT.



WINDHAM FABRICS

# Butterfly

Page 2



41130-2 Soft Plum



41131-1 Soft Teal



41131-3 Cream



41131-4 Taupe



41132-1 Soft Teal



41132-3 Cream



41132-5 Dark Taupe



41133-3 Cream



41133-4 Taupe



41134-2 Soft Plum



41134-6 Cranberry



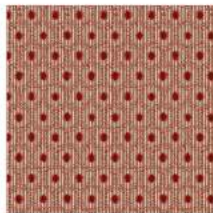
41135-2 Soft Plum



41135-4 Taupe



41136-1 Soft Teal



41136-6 Cranberry



32032-10 Teal



37098-7 Salted Caramel



40401-2 Cream

## Background

40401-2 Cream

3/4 yard (27") (Fig. a )

Cut 18 - 6"x 8" pieces

## Butterflies

15 Assorted Print patterns

1/8 yard or (1) Fat Eighth each (Fig. b )

Cut a total of (18) 2" x 3" rectangles from the assorted prints

## Butterfly Body

37098-7 Salted Caramel

1/8 yard (4 1/2") (Fig. c )

Cut 18 - 2 x 3"

## Small Inner Border

41136-6 Cranberry

1/8 yard ( 4 1/2")

Cut 4 - 1" x Width of Fabric (WOF) Strips

## Second Border

32032-10 Teal

1/4 yard (9")

Cut 4 - 1 1/2" x WOF strips

## Outer Border & Binding

41130-2 Soft Plum

1 yard (36")

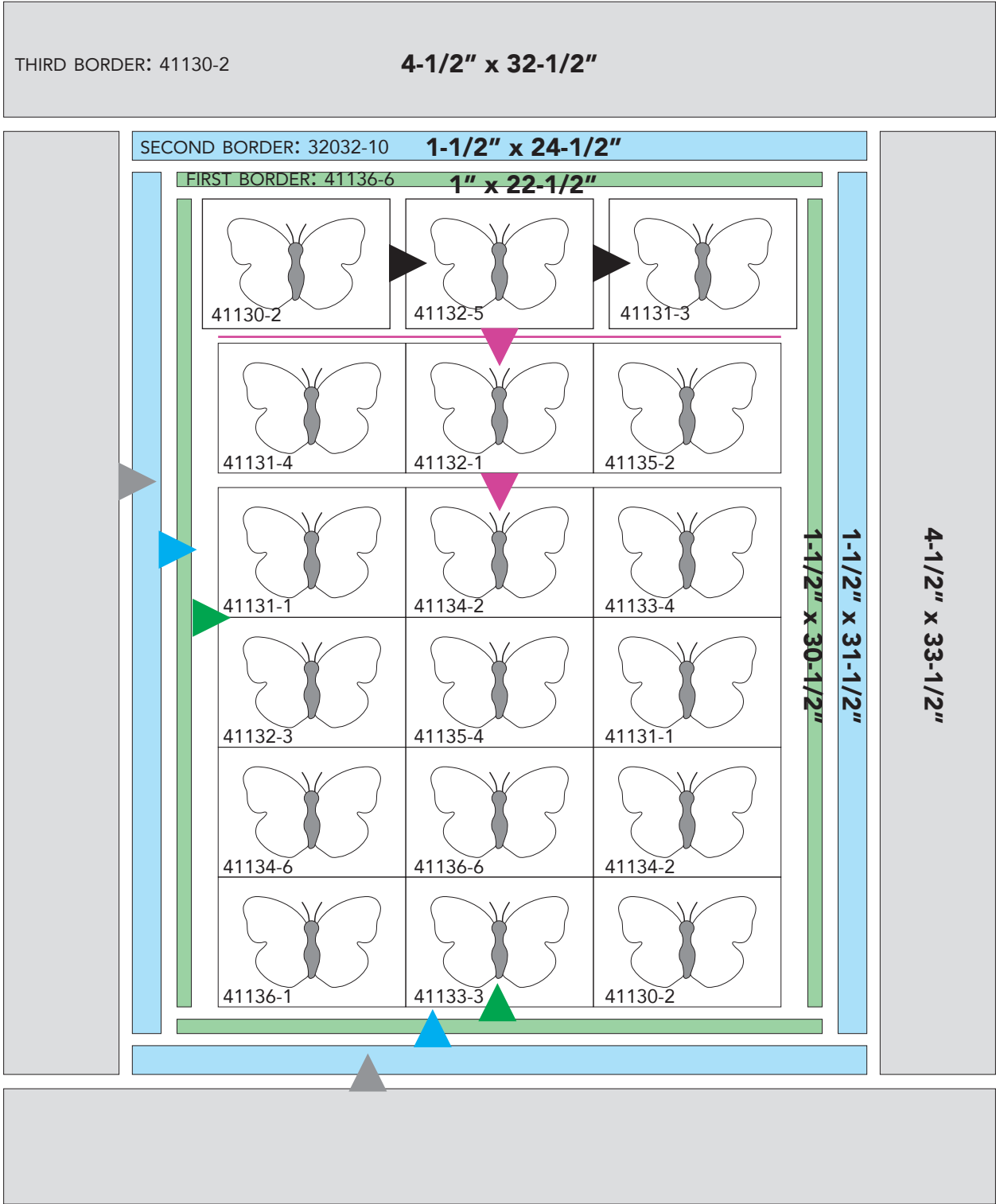
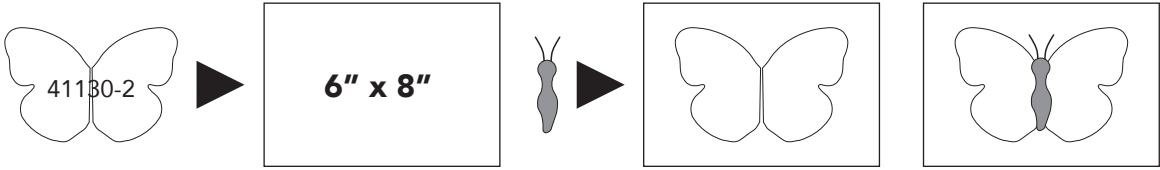
Cut 4 - 4 1/2" x WOF Strips

Cut 4 - 2 1/2" x WOF Strips for binding

## Backing

1 3/8" yd

**Butterfly Blocks:** Stitch (1) wing cut-out to (1) 6" x 8" rectangle, then add (1) body cut-out to complete block, refer to diagrams. Make (18) Butterfly Blocks.



# Butterfly

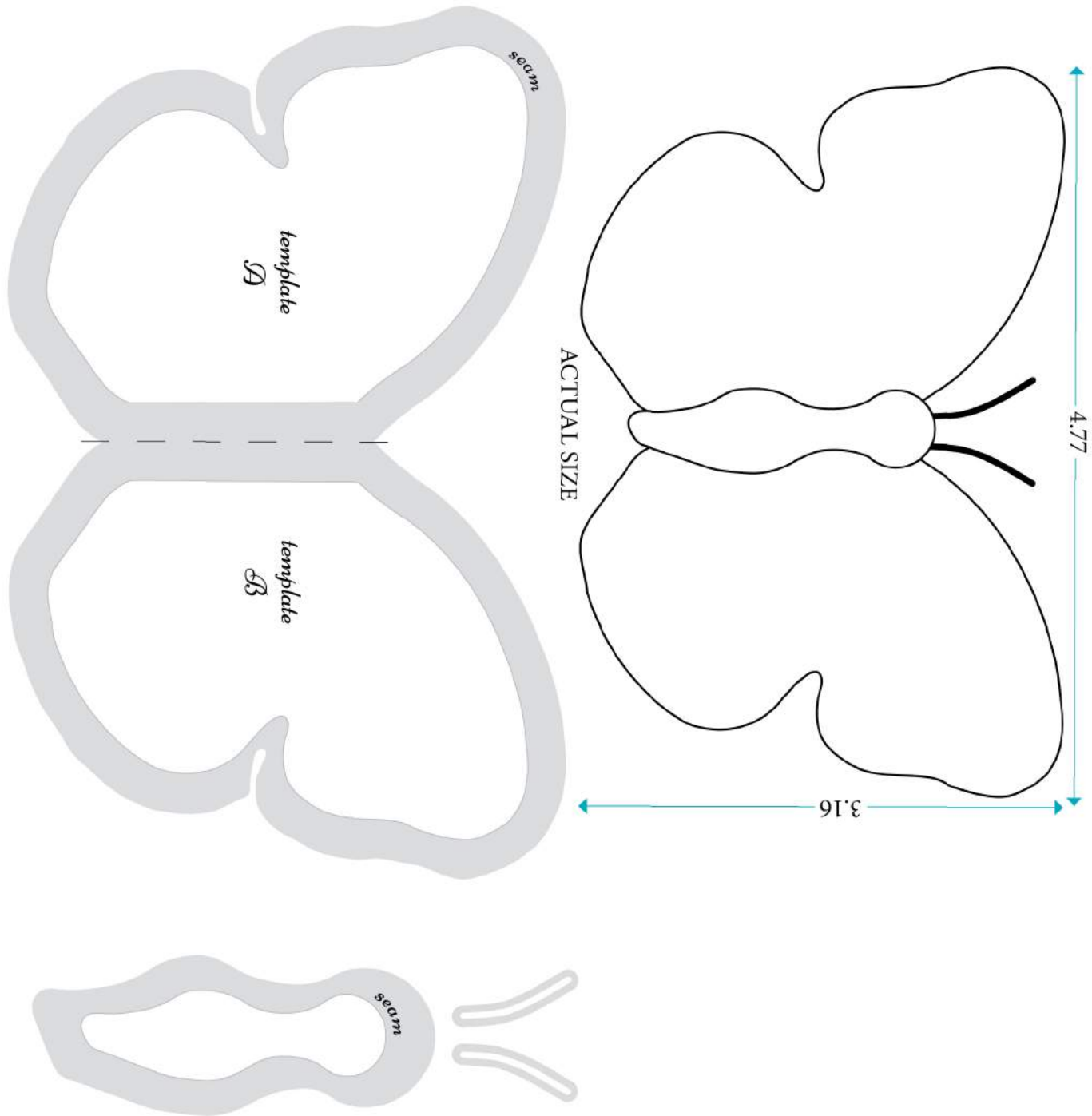
## Page 4

1. Cut 18 background rectangles 6 x 8" (fin. 5 x 7")
2. Cut freezer paper templates: 18 butterflies  
18 bodies
3. Iron freezer paper to Right side of fabric. Mark, cut out, leaving ¼" all around.
- \*For steps 4 - 12, please refer to diagram on pg 3
4. Center on background, and appliqué in your favorite manner; butterflies first, bodies second.
5. Trim blocks to 5½ x 7½."
6. Sew into rows.  
3 per row  
6 rows
7. Sew rows together to make main body of quilt.
8. Cut first border.  
Cut 2 - 1" x 30 1/2" for the sides  
Cut 2 1" x 22 1/2" for top and bottom
9. Stitch to body of quilt.
10. Cut second border.  
Cut 2 - 1 1/2" x 31 1/2" for the sides  
Cut 2 - 1 1/2" x 24 1/2" for the top and bottom
11. Stitch to body of quilt.
12. Cut outer border.  
Cut 2 - 4 1/2" x 33 1/2" for the sides  
Cut 2 - 1 1/2" x 32 1/2" for top and bottom
13. Stitch to body of quilt.
14. Make straight grain binding  
Join 2 1/2" strips at ends  
Fold in half lengthwise and set aside.
15. Embroider butterfly antennae.
16. Embroider along all seam lines. Use feather or any other decorative stitch you like.
- \*Please refer to your favorite quilting source for ideas on knots and stitches. Suggested options on pg 6
17. Sandwich, quilt and bind. Be sure to sign and date your quilt!

# Butterfly

Page 5

*Coryn Butterfly Template*



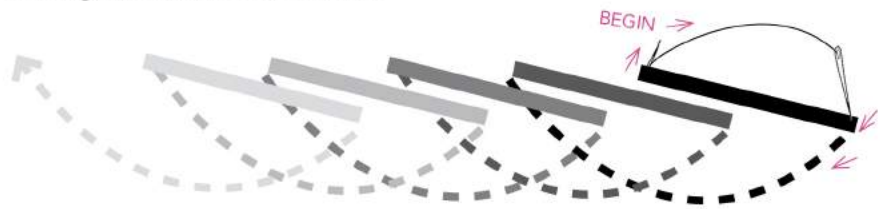
**Please Note:** Print template at 100%, scale: none

# Butterfly

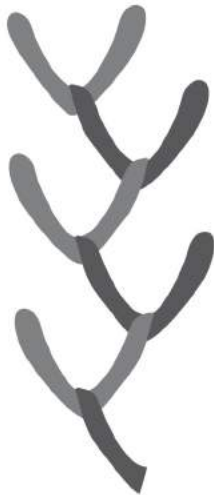
Page 6

Antennae:  
2 rows stem stitch  
stitch-end with french  
knot or curl

Straight/Stem/Back Stitch



Feather Stitch



French Knot

